

ZHEJIANG SUPCON FLUID TECHNOLOGY CO.,LTD.

HQ Add: SUPCON Park, NO.309 Liuhe Road, Binjiang District,
Hangzhou , 310053, China.

Factory Add: SUPCON Industrial Park, NO.209 Golf Road, Fuyang
Districe, Hangzhou , 310053, China.

Tel : +86 571 8111 9774

Email : info@supconvalve.com

Website: www.supconvalve.com

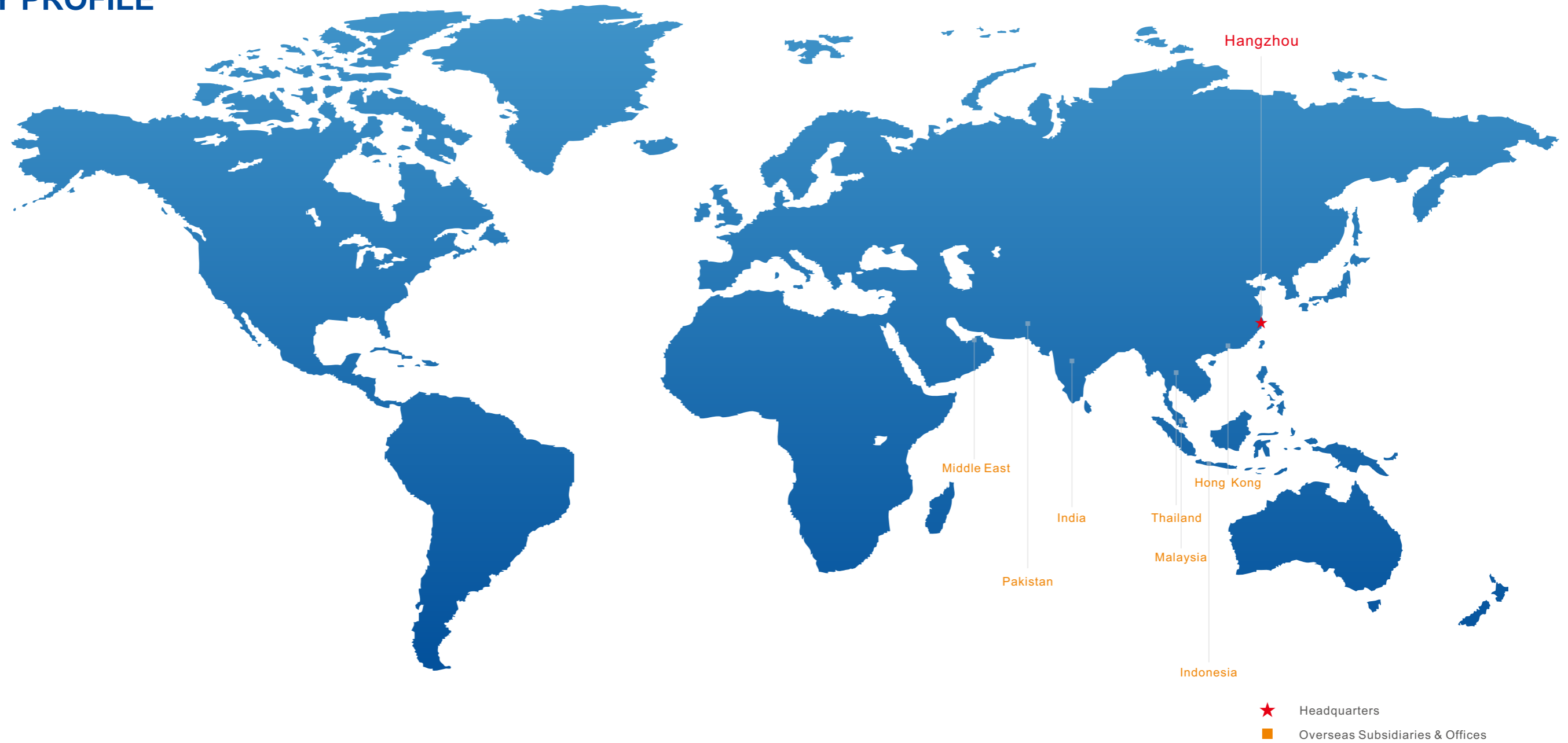
[A intelligent control valve manufacturer and solution supplier](#)

CONTENTS

- 01 COMPANY PROFILE
- 03 OUR STRENGTH
- 05 PRODUCT TREE
- 06 PRODUCT STRUCTURE
- 07 PRODUCT FEATURE
- 11 PRODUCT DETAIL
- 19 CERTIFICATE
- 20 PARTNERS



COMPANY PROFILE



Zhejiang SUPCON Fluid Technology Co., Ltd. is an important member of the SUPCON Group. Our core products, industrial process control valves (Globe Valve, Ball Valve, Eccentric Rotary Valve and Butterfly Valve), has an important position within the InPlant industry automation solution of products and services. We successfully launched high quality valves which can meet various customers' expectations. Our company is committed to providing users with international competitiveness of high quality product and comprehensive technical services in oil and refinery, petrochemical, coal chemical, fine chemical, metallurgy and so on.

We provide high qualified technical resources to our globe customers with our profound technology and after-sale supports. We have set up subsidiaries in Hong Kong and India, and overseas offices in South Asia, Southeast Asia and the Middle East to offer fast and reliable service to customers in local and surrounding areas. We do our best to help our customers to maintain and evolve existing installations, thereby maximizing customer value and ensuring safe plant operation.



OUR STRENGTH

Production Traceability

The ERP management and MES manufacturing are fully applied during the whole process of producing, with these two softwares, artificial errors can be reduced maximally, and every production step of each product can be traced.



Mechanical Arm



Machining Center



Computer Aided Manufacturing



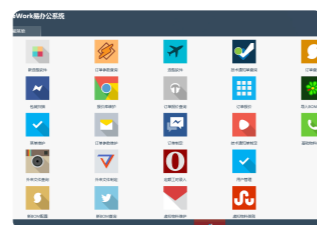
Supersonic Spraying



Plasma Spray Welding



Control Valve Selection Software



Manufacturing Execution System



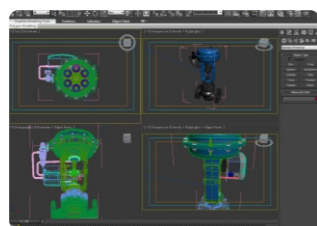
RFID Product Traceability Software

R&D Technology

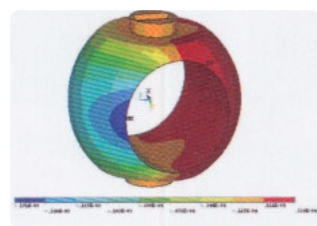
We employ experts for every important position like R&D, process technology, quality control, after-sale service, etc. The latest technologies are adopted to develop new products and improve performance. For new products developing, our team will build a virtual environment with serious condition to analyze statistics and indicators, find the potential weakness and revise it.



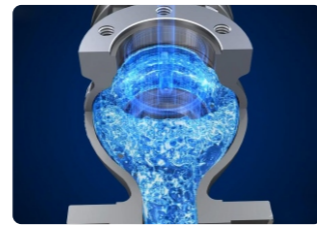
2D Product Design



3D Product Design



Finite Element Analysis



Working Conditions' Simulation

Focus On Details

We have built a physical and chemical lab to do the material combination inspection to ensure the material fit rigorous working condition before and during production. During the production, the QC and workers will do leakage test more than 3 times. We are certified with capabilities such as fire safe, fugitive emissions, flow capacity, vibration resistance and safety integrity(SIL), etc.



Flow Testing



Testing with Temperature



Life-span Testing



Performance Testing



Material Spectral Analysis



Material Mechanical Properties Testing



Torque Testing



Three Coordinates Measuring



Coating Thickness Check



Residue Determination

Superior Service

HIGH QUALITY
Design and manufacture high quality products with 30% R&D engineers.

FAST DELIVERY
Faster delivery by air or by express(DHL, UPS, TNT or Fedex) or by sea.

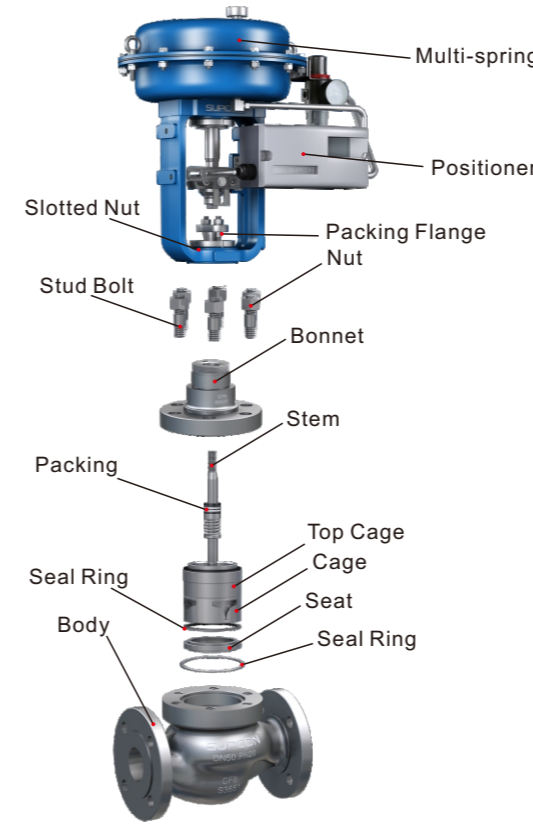
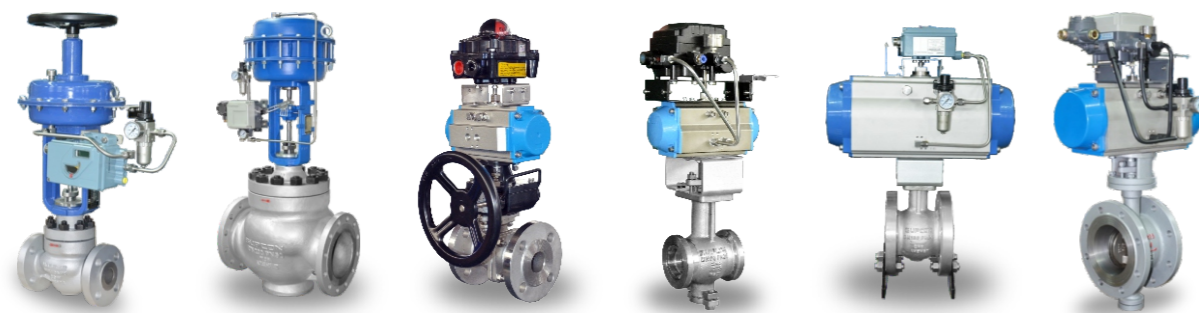
SMALL ORDER ACCEPTABLE
Small order is accepted, we treat every order well.

WONDERFUL TEAM
Professional sales team to offer fast response and good service.

OEM ACCEPTABLE
Many years OEM experience for clients from Middle East and Southeast Asia.

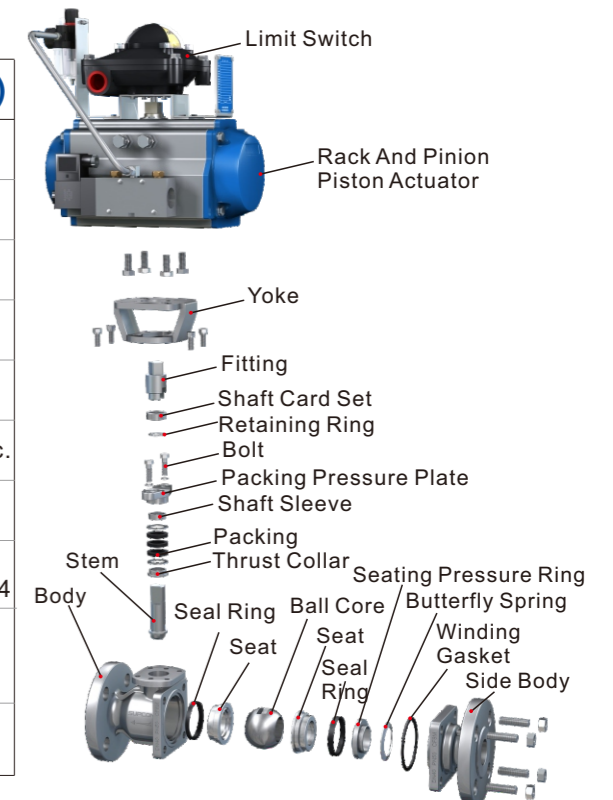
ABUNDANT PRODUCTS
Full product lines for industry process control valve.

PRODUCT TREE

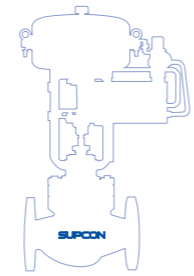


Linear Motion Control Valve (LN8, LM8)	
Nominal Size	1/2"-16"; DN15-DN400
Pressure Rating	CL150-CL2500; PN16-PN420
Fluid Temperature	-196°C-593°C
Connections	RF, RJ, FM, SW, BW
Body Material	WCB/WCC/LCB/LCC;WC6/WC9;CF8/CF8M, etc
Trim Material	630/316/316+ST/316+SN/316+Ni60/316+WC, etc
Seal Material	PTFE, RTFE, Flexible graphite, etc.
Seat Leakage	Class IV-VI according to ANSI B16.104
Rangeability	30:1, 50:1, 100:1
Characteristics	Equal percentage, Linear, Quickly open.

Rotary Motion Control Valve (SN5, VN6, CN8, BN)	
Nominal Size	1/2"-64"; DN15-DN1600
Pressure Rating	CL150-CL2500; PN16-PN420
Fluid Temperature	-45°C-538°C
Connections	RF, FM, RJ, BW, Wafer type, Lug type.
Body Material	WCB/WCC/LCB/LCC;WC6/WC9;CF8/CF8M, etc.
Trim Material	630/316/316+ST/316+SN/316+Ni60/316+WC, etc.
Seal Material	PTFE, Flexible graphite, etc.
Seat Leakage	On-off : Zero leakage according to API 598; Regulating: Class IV-VI according to ANSI B16.104
Rangeability	100:1 (Eccentric rotary valve) 300:1 (V-notch ball valve) None (O-type ball valve)
Characteristics	Approximately equal percentage; Approximately linear; Quickly open.



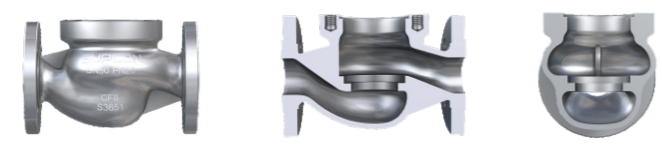
GLOBE CONTROL VALVE FEATURE



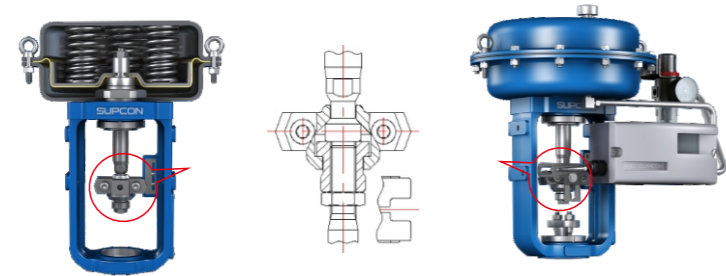
Long life

■ Trims
Based on the working condition we are informed, we will choose or suggest to use corresponding material or special surface treatment for the trims, thus to can protect trims from erosion cavitations and corrosion, increase the service life.

■ Body
The valve body of LN8 series is consist of two runners which has formed a sigmate shape. This can reduce the flow resistance and turbulent to keep the media running fluently. The flap in the middle of the top runner can reduce the eddy flow and increase the flow capacity.



■ Diaphragm Actuator
The standard configuration of LN8 series is AM8 multi-spring pneumatic diaphragm actuator, which can working in different working conditions. High reliability, long lifespan and extensive application. The output force are changing with the number of the springs. The high pressure resistant diaphragm can bearing maximum 0.5MPa air supply. This type of actuator has a long life cycle more than 1 million times.



Well sealed

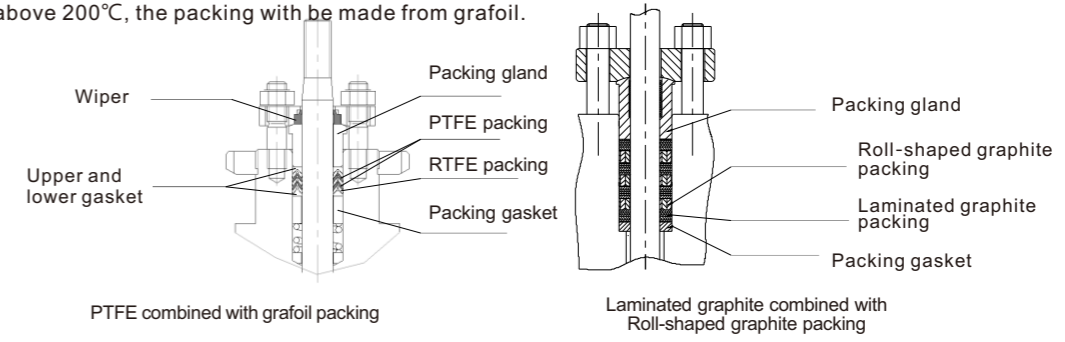
■ Structure

a. New function modular design

b. Self-centring seat design

■ Packing system

The packing box assemblies are also optimized. Seal ring in the gland flange can prevent the dirt from entering and protect the packings. The V-ring is added with an U-groove and its angle is changed from conventional 90° to more afficent 85°. The packing is a combination of alternating pure PTFE and PTFE with grafoil. When the temperature of fluid is above 200°C, the packing with be made from grafoil.



High precision

LN8 series control valves are designed strictly in compliance with the IEC standard. They are the latest self—innovated modularized straight stroke control valve of SUPCON. We divide the trims into three modules, namely guide, control and seal module. We provide the best solution according to the function of each module and make action, control and seal more reliable.

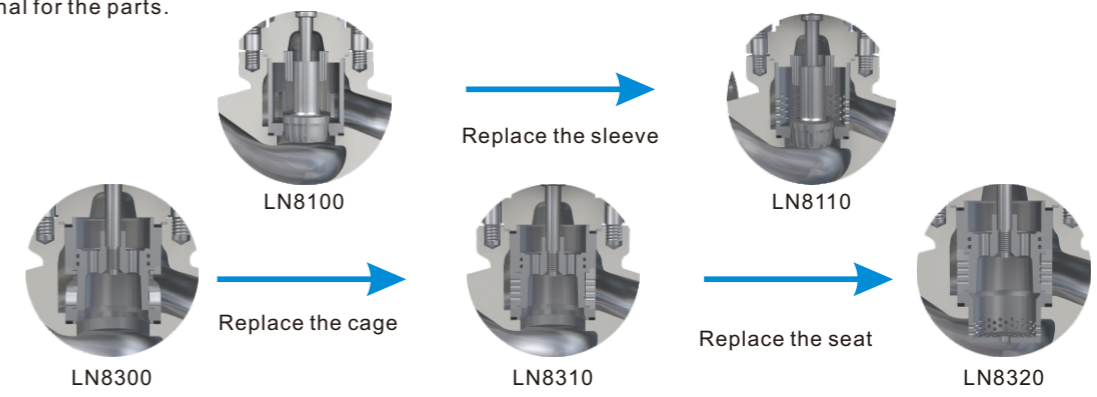
Each index, linear, hysteresis, dead zone and leakage, among others, follows national standards.

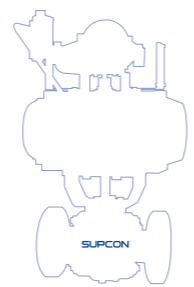
Test items	National standard	Our company standard	Measured results
Seat leakage	0.064 (L/min.)	0.064(L/min.)	0.01 (L/min.)
Rated travel error	+2.5%	+2%	1.32%
Start error	±2.5%	±2%	0%
End error	±2.5%	±2%	0.08%
Basic error	±1.5%	±1%	-0.52%
Hysteresis	1.5%	1%	0.16%
Dead band	0.6%	0.4%	0.38%

Note: For above measured results, take LN8100 top guide single seat valve (PN 10) as an example.

Easy to maintain

The unique platform and modul design make it easy to remove and displace the parts without special tools, and moreover, easy to change the type of the valve only by changing a few parts. A variety of material combinations is optional for the parts.

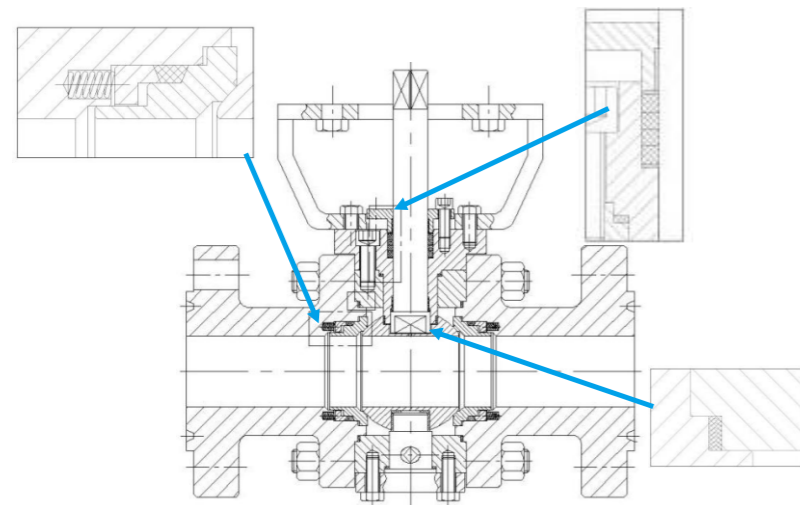




BALL VALVE FEATURE

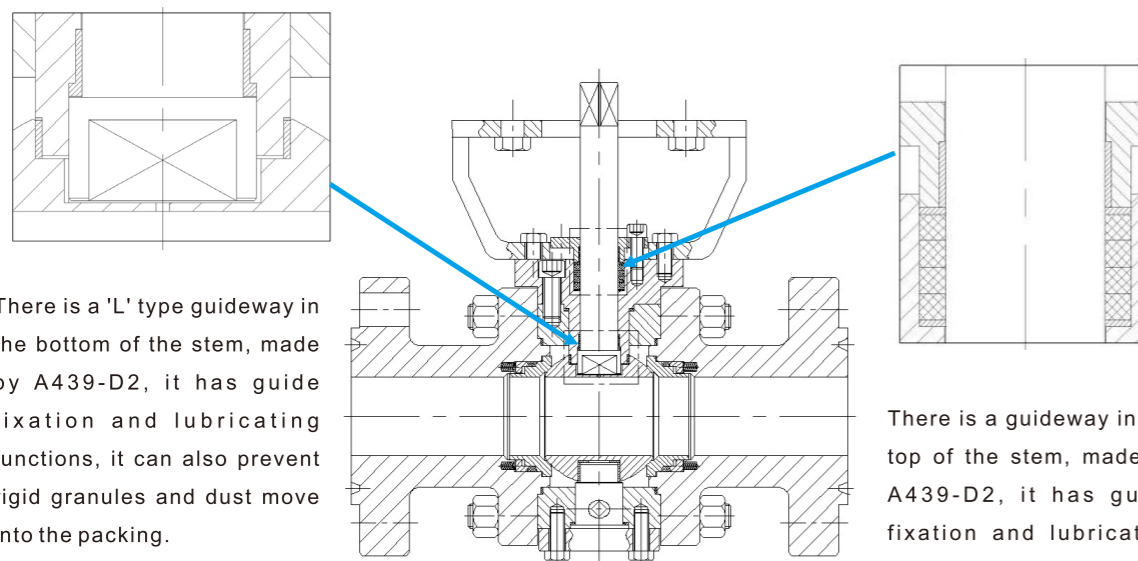
Intrinsical Fire Proof

The seal materials between valve seat, ball and valve body are consist of metal and graphite. This can achieve fire proof unconditionally. The ball, valve seat, valve body and trims are metal, the contact between them will bring conductive path, the focused charge will be transferred so that electrostatic accumulation can be avoided.



The seal ring between valve body and lateral body are spiralwound gasket, consist of metal and graphite to achieve fire proof.

Dual Guide, Light Torque

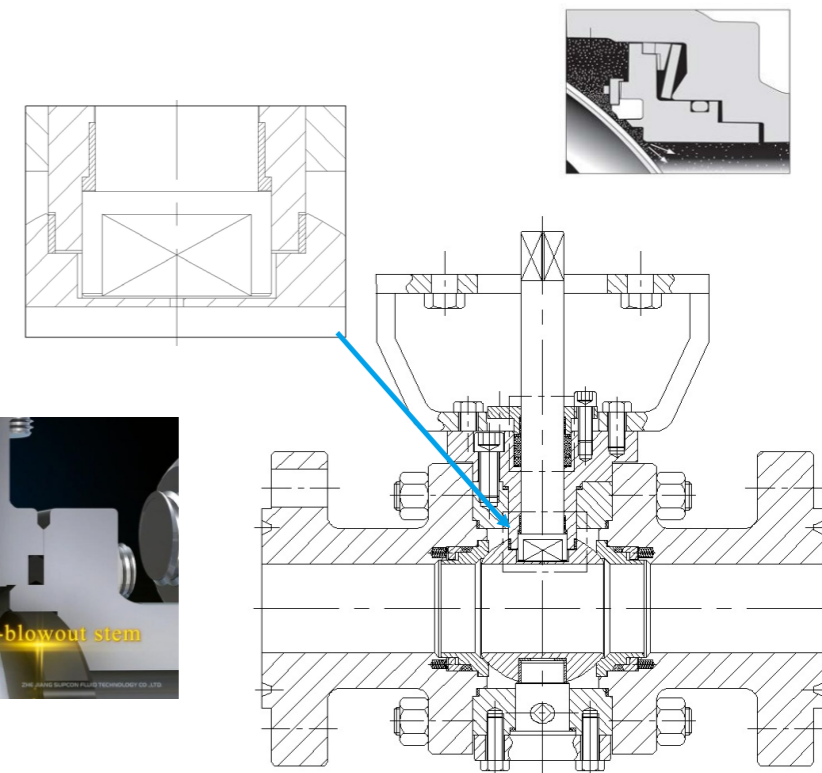


There is a 'L' type guideway in the bottom of the stem, made by A439-D2, it has guide fixation and lubricating functions, it can also prevent rigid granules and dust move into the packing.

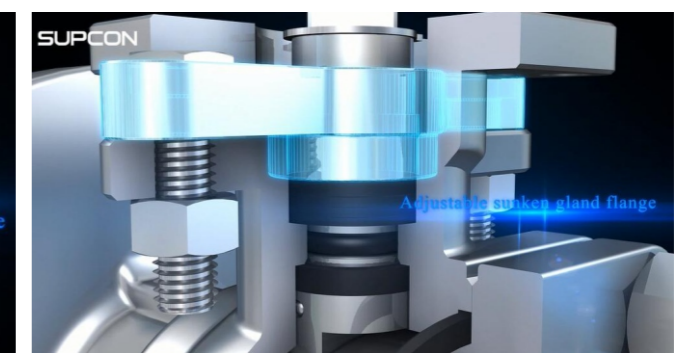
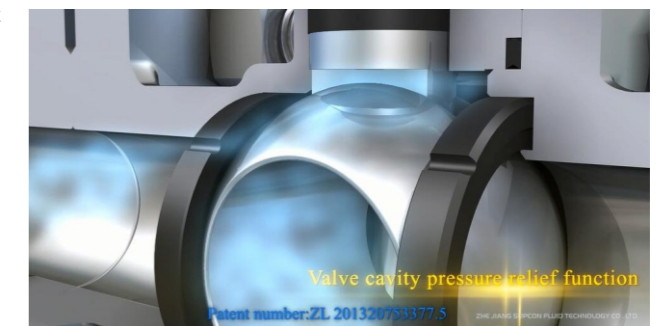
There is a guideway in the top of the stem, made by A439-D2, it has guide fixation and lubricating functions

Safety Design

Here is a groove in the bottom of the bonnet, it can fixed the stem to ensure the stem will not fly out under the push of media pressure.



- Full open: there is a balance hole in the groove, it interlinks the pipe and valve chamber to ensure the media pressure in the valve chamber is regular.
- Full closed: if the media pressure rise irregularly, and reach the pressure relief balance of the spring, the valve will separate from the ball, so the exorbitance pressure can be released to the pipe lines.



PRODUCT DETAIL

LN81/82 Series Single Seated Globe Control Valve



- ▶ High accuracy of adjustment.
- ▶ Simple and reliable structure.
- ▶ Excellent sealing, low leakage.
- ▶ Easy to maintain and disassembly.

Applicable condition:

Normal differential pressure, high adjustment accuracy required and low leakage.

LN83/85 Series Cage Guided Globe Control Valve



- ▶ Cage internal wall guided.
- ▶ Good dynamic stability.
- ▶ Low impetus required.
- ▶ Anti-erosion.
- ▶ High differential pressure allowed.
- ▶ Low maintain cost.

Applicable condition:

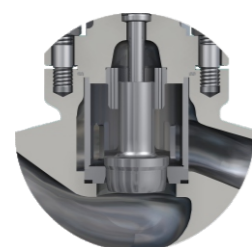
High differential pressure, strong noise, high erosion and temperature.

Main technical parameters

Nominal Size	DN15~DN300	Operating Temperature	-196°C ~ +593°C
Pressure Rating	DIN: PN16 / PN25 / PN40 / PN63 / PN100 ANSI: CL150 / CL300 / CL600		
Characteristics	Equal percentage, Linear, Quickly open		Rangeability: 30:1/50:1/100:1
Seat leakage	Class IV, V, VI according to ANSI B16.104		

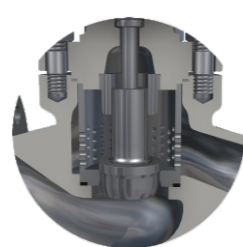
Main technical parameters

Nominal Size	DN40~DN400	Operating Temperature	LN83: -40°C ~ +150°C LN85: -80°C ~ +260°C
Pressure Rating	DIN : PN16 / PN25 / PN40 / PN63 / PN100 ANSI : CL150 / CL300 / CL600		
Characteristics	Equal percentage, linear, Quickly open		Rangeability: 50:1
Seat leakage	Class IV, V, VI according to ANSI B16.104		



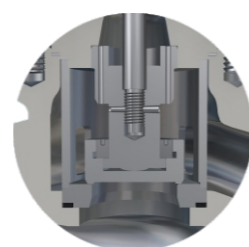
LN8100

Top Guided Single-seated



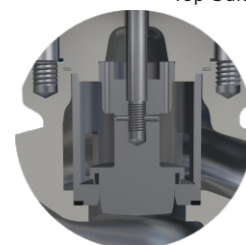
LN8110

Perforated Cage Single-Seated



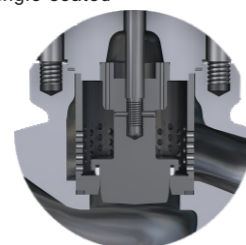
LN8120

Quick Open Type Single-Seated



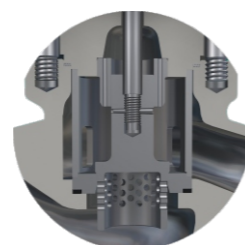
LN8130

Soft Seal Single-seated



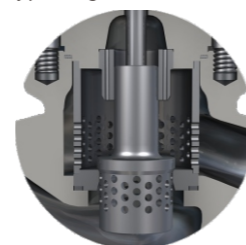
LN8140

Perforated Cage Soft Seal Single-Seated



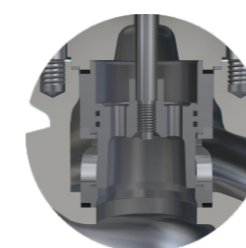
LN8200

Double Guided Single-Seated

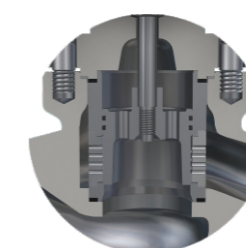


LN8220

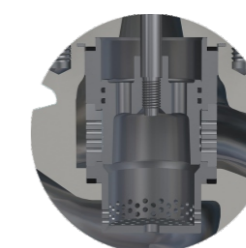
Low Noise Double Guided Single-Seated



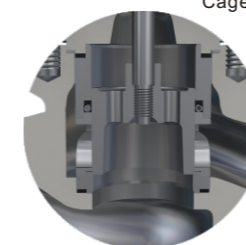
LN8300
Cage Guided



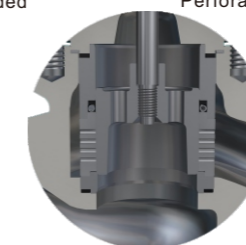
LN8310
Perforated Cage Guided



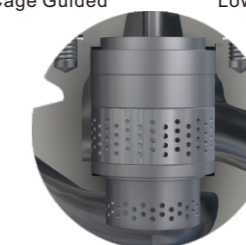
LN8320
Low Noise Cage Guided



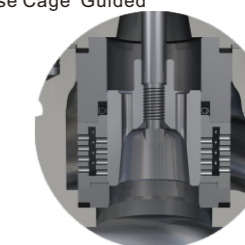
LN8500
Cage Guided



LN8510
Perforated Cage Guided



LN8520
Low Noise Cage Guided



LN8550
Double Cages Guided

LN87 Series Cage Guided Globe Control Valve



- ▶ Cage internal wall guided.
- ▶ Good dynamic stability.
- ▶ Low impetus required.
- ▶ Anti-erosion.
- ▶ High differential pressure allowed.
- ▶ Low maintain cost.

Applicable condition:

High differential pressure, strong noise, high erosion and temperature.

LM8 Series High Pressure Globe Control Valve



- ▶ Top guided.
- ▶ High accuracy and sealing performance.
- ▶ Simple structure and strong applicability.
- ▶ Multi-hole cage are good at reduce pressure and noise.
- ▶ High anti gas etching performance.

Applicable condition:

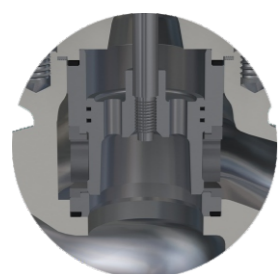
Serious condition with high differential pressure.

Main technical parameters

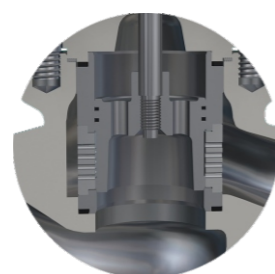
Nominal Size	DN40~DN400	Operating Temperature	-196°C~+593°C
Pressure Rating	DIN : PN16 / PN25 / PN40 / PN63 / PN100 ANSI : CL150 / CL300 / CL600		
Characteristics	Equal percentage, Linear, Quickly open		Rangeability: 50:1
Seat leakage	Class IV, V, VI according to ANSI B16.104		

Main technical parameters

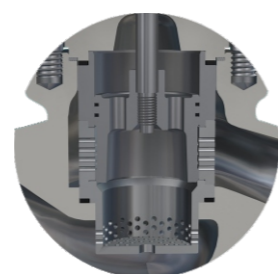
Nominal Size	DN25~DN300	Operating temperature	-196°C~+593°C
Nominal Pressure	DIN : PN160/PN250 ANSI : CL900/CL1500/CL2500		
Characteristics	Equal percentage, Linear, Quickly open		Rangeability: 50:1
Seat leakage	Class IV, V, VI according to ANSI B16.104		



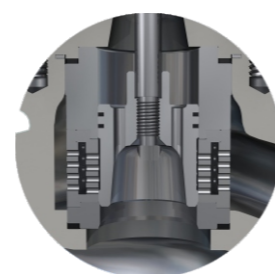
LN8700
Cage Guided



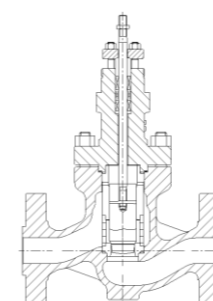
LN8710
Perforated Cage Guided



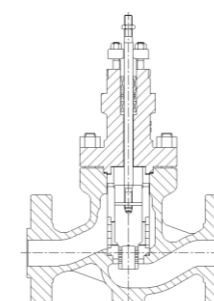
LN8720
Low Noise Cage Guided



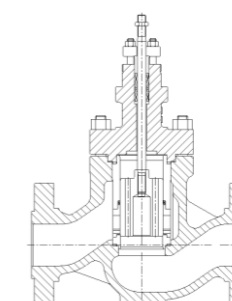
LN8750
Double Cages



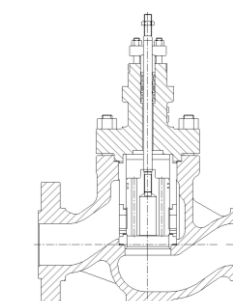
Lm8110
High Pressure Perforated Cage
Single-Seated Control Valve



Lm8200
High Pressure Double Guided
Single-Seated Control Valve



Lm8500
High Pressure Cage Guided
Control Valve(Spring-Energized Ring)



Lm8700
High Pressure Cage Guided
Control Valve(Piston Ring)

SN5 Series Soft-seal O-type Ball Valve



- ▶ Full-port design
- ▶ Excellent cut off function
- ▶ Smallest fluid pressure drop
- ▶ Static free

Applicable condition:
Suitable for cut off liquid and gas. Metal seal are suit for the media with solid particles or slurries under various temperatures.

SN5 Series Metal-seal O-type Ball Valve



- ▶ Full-port design
- ▶ Excellent cut off function
- ▶ Smallest fluid pressure drop
- ▶ Static free

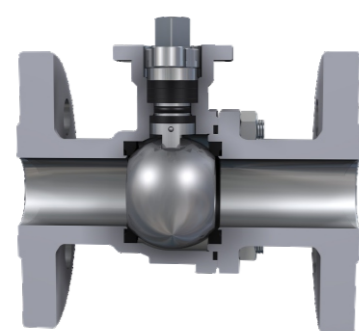
Applicable condition:
Suitable for cut off liquid and gas. Metal seal are suit for the media with solid particles or slurries under various temperatures.

Main technical parameters

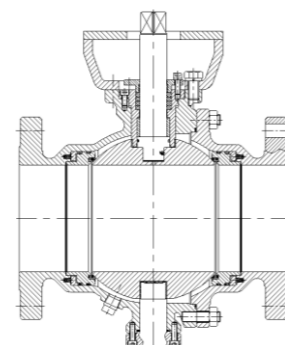
Nominal Size	DN15~DN600	Operating Temperature	-46°C~+200°C
Pressure Rating	DIN : PN16 / PN25 / PN40 ANSI : CL150 / CL300		
Characteristics	Quickly open		
Seat leakage	Bubble Tight / Zero Leakage		

Main technical parameters

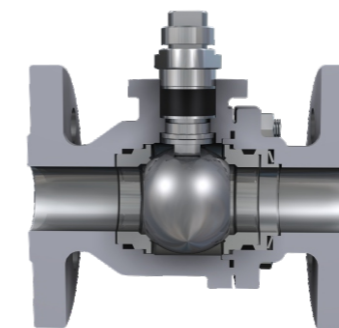
Nominal Size	DN15~DN400	Operating Temperature	-46°C~+538°C
Pressure Rating	DIN : PN160 / PN250 ANSI : CL900 / CL1500 / CL2500		
Characteristics	Quickly open		
Seat leakage	Bubble Tight / Zero Leakage		



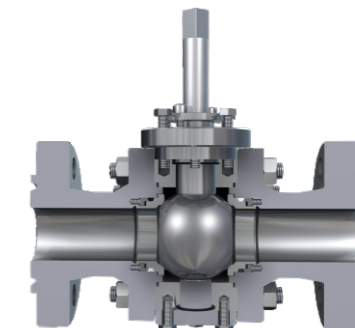
Floating Type Soft-seal Ball Valve



Trunnion Type Soft Seat Ball Valve



Floating Type Metal Seat Ball Valve



Trunnion Type Metal Seat Ball Valve

VN6 Series V-notch Ball Valve



- ▶ V-type notch can cut off the slurries media into smaller pieces.
- ▶ Light valve weight.
- ▶ Large rangeability.
- ▶ Free runner.

Applicable condition:
Paper & pulp, waste water, fibre or slurry.

CN8 Series Eccentric Rotary Control Valve



- ▶ Integrated structure.
- ▶ Small pressure drop.
- ▶ Special stem structure to reduce abrasion.
- ▶ Excellent rigidity and stability.
- ▶ Large output torque.

Applicable condition:
Especially suitable for slurry condition.

Main technical parameters

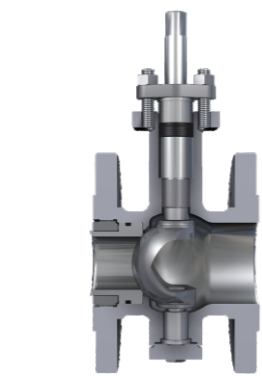
Nominal Size	DN20~DN300	Operating Temperature	-46°C~+400°C
Pressure Rating	DIN: PN16 / PN25 / PN40 ANSI: CL150 / CL300		
Characteristics	Approximately equal percentage	Rangeability: 300:1	
Seat leakage	Class IV,V, VI according to ANSI B16.104		

Main technical parameters

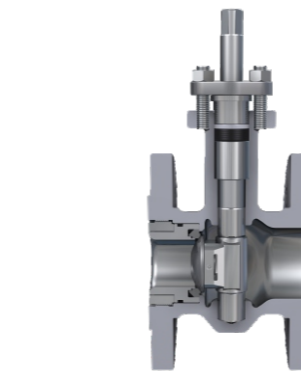
Nominal Size	DN20~DN300	Operating Temperature	-46°C~+450°C
Pressure Rating	DIN: PN16 / PN25 / PN40 / PN63 / PN100 ANSI: CL150 / CL300 / CL600		
Characteristics	Approximately equal percentage	Rangeability: 100:1	
Seat leakage	Class IV,V, VI according to ANSI B16.104		



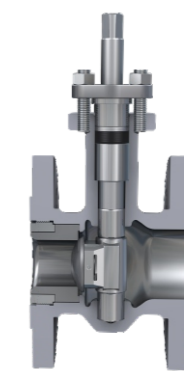
Soft-seal V-notch Ball Valve



Metal-seal V-notch Ball Valve



Soft-seal Eccentric Rotary Control Valve

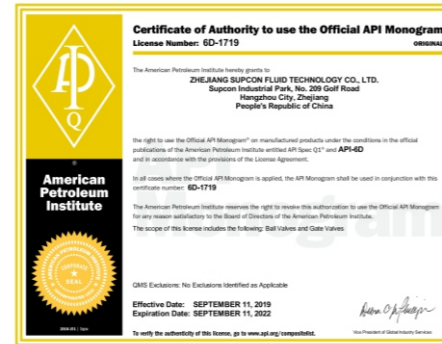


Metal-seal Eccentric Rotary Control Valve

CERTIFICATES



BV SIL



API-6D



ISO9001/ISO14001/OHSAS1800



ISO15848 Certificate



API607



SIL Functional Security Level Certificate

PARTNERS

